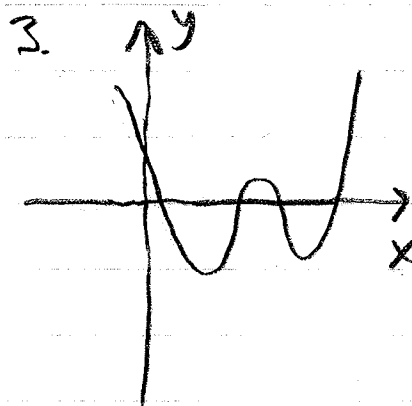
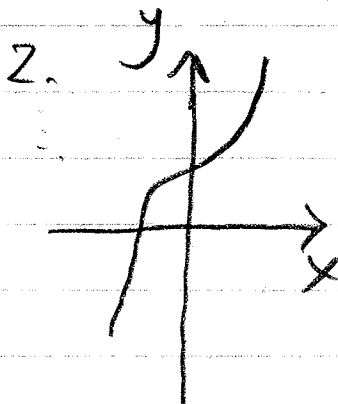
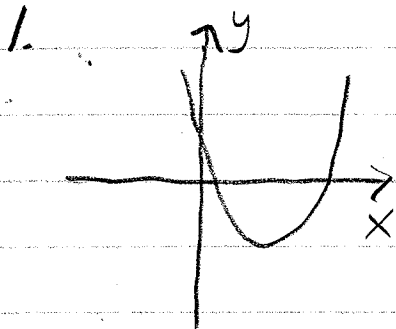


Sheet
#320

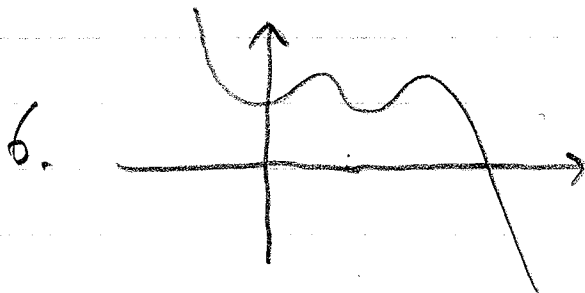
NAME: _____

POLYNOMIALS : LONG-TERM BEHAVIOR & INTERCEPTS



4. $3x^3 + x^2 - 1$

5. $(x+1)(x-1)(x+2)(x-3)(x+3)$



7. $-x^8 + x^{17} - 3$

QUESTIONS

A. STATE A POSSIBLE DEGREE

B. RISE OR FALL?

a) Left $x \rightarrow -\infty$

b) Right $x \rightarrow \infty$

RUNNING

"BACKWARD"

"FORWARD"

C. NUMBER OF X-INTERCEPTS

D. LEADING COEFFICIENT: POSITIVE OR NEGATIVE?

E. Y-INTERCEPT (NUMBER OR PUT AN ARROW ON THE GRAPH).